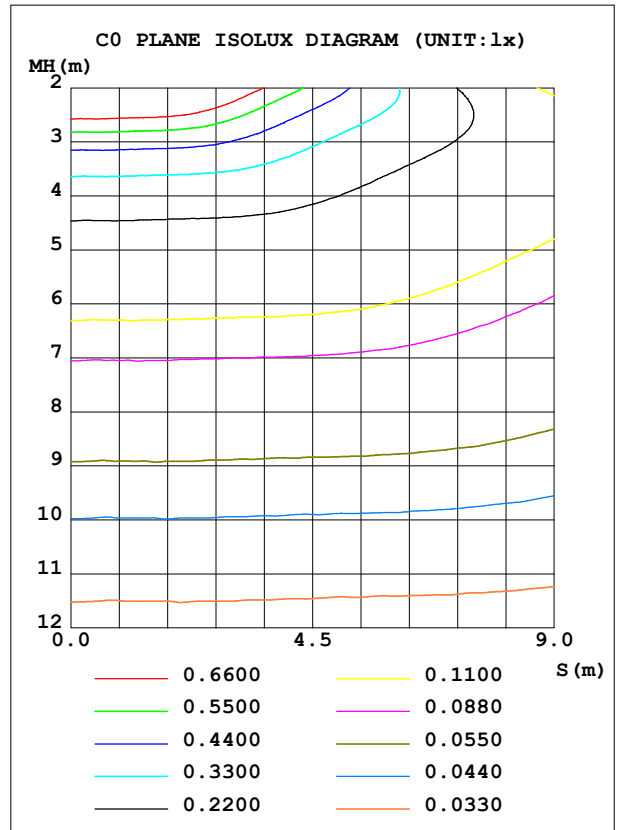
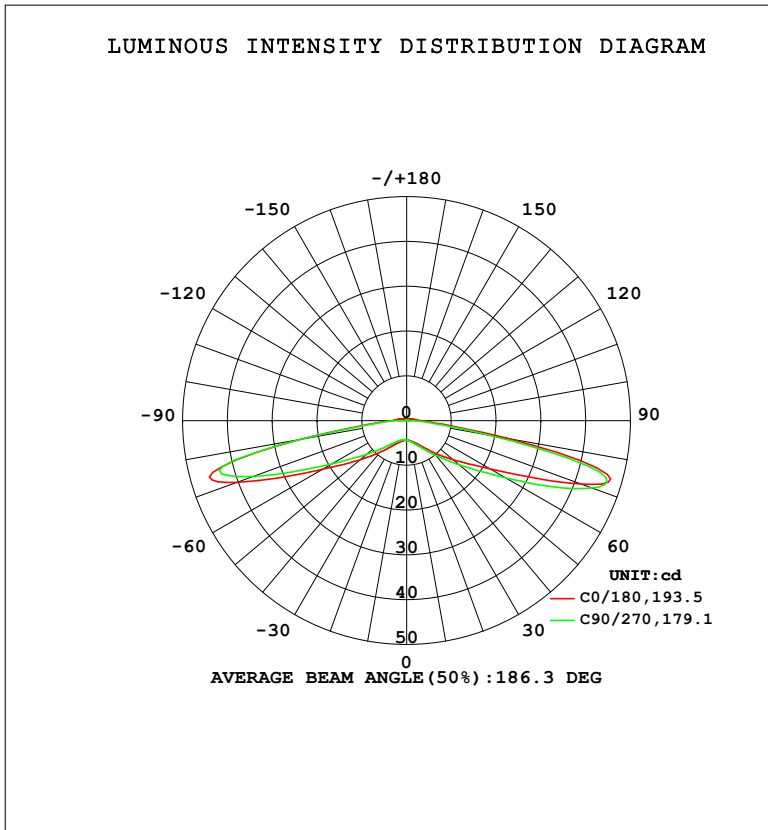


LUMINAIRE PHOTOMETRIC TEST REPORT

Test:U:23.976V I:0.0299A P:0.7160W PF:1.0000 Freq:0Hz		
UTHDi:0.00% ITHDi:0.00% KDisp:0 Lamp Flux:120.78x1 lm		
NAME: NOVA 2D	TYPE:	WEIGHT:
SPEC.:	DIM.:	SERIAL No.:
	SUR.:	Shielding Angle:

DATA OF LAMP		PHOTOMETRIC DATA			
MODEL		Imax (cd)	47.83	S/MH (C0/180)	4.39
NOMINAL POWER (W)		LOR (%)	100.0	S/MH (C90/270)	4.74
RATED VOLTAGE (V)	12	TOTAL FLUX (lm)	120.78	η UP, DN (C0-180)	2.2, 46.0
NOMINAL FLUX (lm)	120.78	CIE CLASS	DIRECT	η UP, DN (C180-360)	1.9, 49.9
LAMPS INSIDE	1	η up (%)	4.1	CIBSE SHR NOM	2.00
TEST VOLTAGE (V)	11.9386	η down (%)	95.9	CIBSE SHR MAX	2.00



C Range: 0 - 360DEG
 C Interval: 22.5DEG
 Test Speed: HIGH
 Temperature: 25.3°C
 Operators: DAMIN
 Test Date: 2024-03-21

γ Range: 0 - 180DEG
 γ Interval: 1.0DEG
 Test System: SALED GO-2000B_V1 SYSTEM V2.00.479
 Humidity: 65.0%
 Test Distance: 8.700m [K=1.0000]
 Remarks:

ZONAL FLUX DIAGRAM

ZONAL FLUX DIAGRAM:

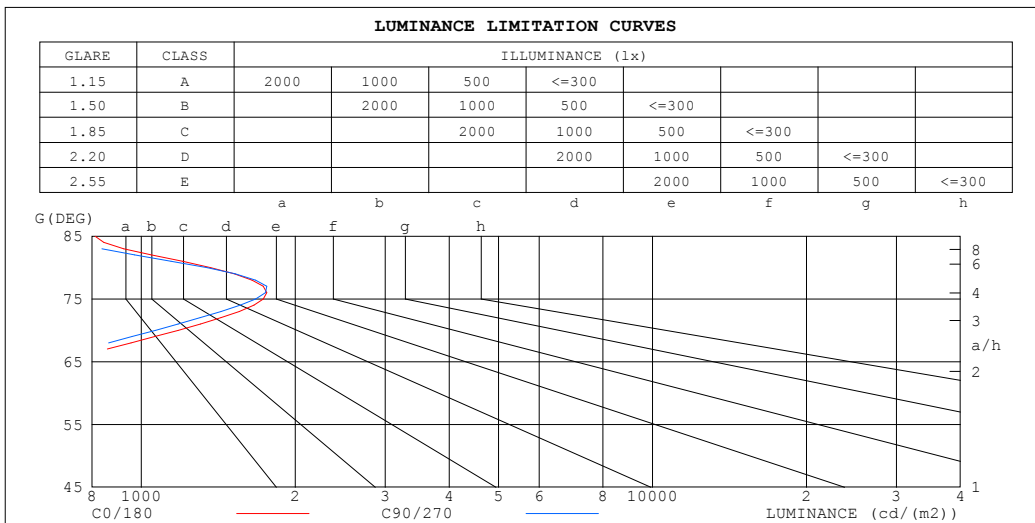
γ	C0	C45	C90	C135	C180	C225	C270	C315	γ	Φ zone	Φ total	%lum,lamp
10	4.592	4.434	4.363	4.412	4.593	4.696	4.729	4.713	0- 10	0.4258	0.4258	0.35,0.35
20	5.219	4.962	4.793	4.919	5.253	5.499	5.553	5.455	10- 20	1.382	1.808	1.5,1.5
30	6.597	6.123	5.807	6.047	6.623	7.163	7.180	6.940	20- 30	2.708	4.516	3.74,3.74
40	9.186	8.478	7.856	8.270	9.271	10.16	10.17	9.866	30- 40	4.892	9.409	7.79,7.79
50	13.60	12.49	11.76	12.35	13.64	15.01	15.39	14.84	40- 50	8.740	18.15	15,15
60	21.79	19.51	19.36	20.70	21.63	24.43	25.70	24.06	50- 60	15.63	33.78	28,28
70	40.36	36.80	36.41	39.44	41.54	44.02	44.03	42.87	60- 70	30.50	64.28	53.2,53.2
80	23.72	25.52	23.37	23.12	22.60	21.19	18.55	22.54	70- 80	42.13	106.4	88.1,88.1
90	3.467	3.790	2.788	3.320	3.133	2.898	0.7895	2.184	80- 90	9.402	115.8	95.9,95.9
100	1.943	1.959	0.2291	1.828	1.788	1.657	0.1691	1.706	90-100	2.247	118.1	97.7,97.7
110	1.162	1.075	0.2291	1.004	1.058	0.9317	0.1636	0.9155	100-110	1.181	119.2	98.7,98.7
120	0.7584	0.6003	0.2182	0.5566	0.6814	0.5071	0.1473	0.4962	110-120	0.6325	119.9	99.2,99.2
130	0.5673	0.4583	0.2073	0.4311	0.5017	0.3707	0.1473	0.3817	120-130	0.3856	120.3	99.6,99.6
140	0.4745	0.3982	0.2126	0.3328	0.4088	0.2671	0.1362	0.3163	130-140	0.2640	120.5	99.8,99.8
150	0.3710	0.2129	0.1582	0.1583	0.2504	0.0873	0.0873	0.1689	140-150	0.1633	120.7	99.9,99.9
160	0.1091	0.1310	0.1200	0.1200	0.0873	0.0873	0.0873	0.0873	150-160	0.0613	120.7	100,100
170	0.0982	0.0928	0.1036	0.1036	0.0873	0.0873	0.0873	0.0873	160-170	0.0276	120.8	100,100
180	0.0873	0.0927	0.0873	0.0982	0.0873	0.0873	0.0873	0.0873	170-180	0.0087	120.8	100,100
DEG	LUMINOUS INTENSITY:cd									UNIT:lm		

C Range: 0 - 360DEG
 C Interval: 22.5DEG
 Test Speed: HIGH
 Temperature:25.3°C
 Operators:DAMIN
 Test Date:2024-03-21

γ Range: 0 - 180DEG
 γ Interval: 1.0DEG
 Test System: SALED GO-2000B_V1 SYSTEM V2.00.479
 Humidity:65.0%
 Test Distance:8.700m [K=1.0000]
 Remarks:

LUMINANCE LIMITATION CURVES

Test:U:23.976V I:0.0299A P:0.7160W PF:1.0000 Freq:0Hz		
UTHDi:0.00% ITHDi:0.00% KDisp:0 Lamp Flux:120.78x1 lm		
NAME: NOVA 2D	TYPE:	WEIGHT:
SPEC.:	DIM.:	SERIAL No.:
	SUR.:	Shielding Angle:



LUMINANCE cd/(m2)		
G (DEG)	C0/180	C90/270
85	812	714
80	1366	1346
75	1732	1673
70	1180	1065
65	697	627
60	436	387
55	295	258
50	212	183
45	157	134

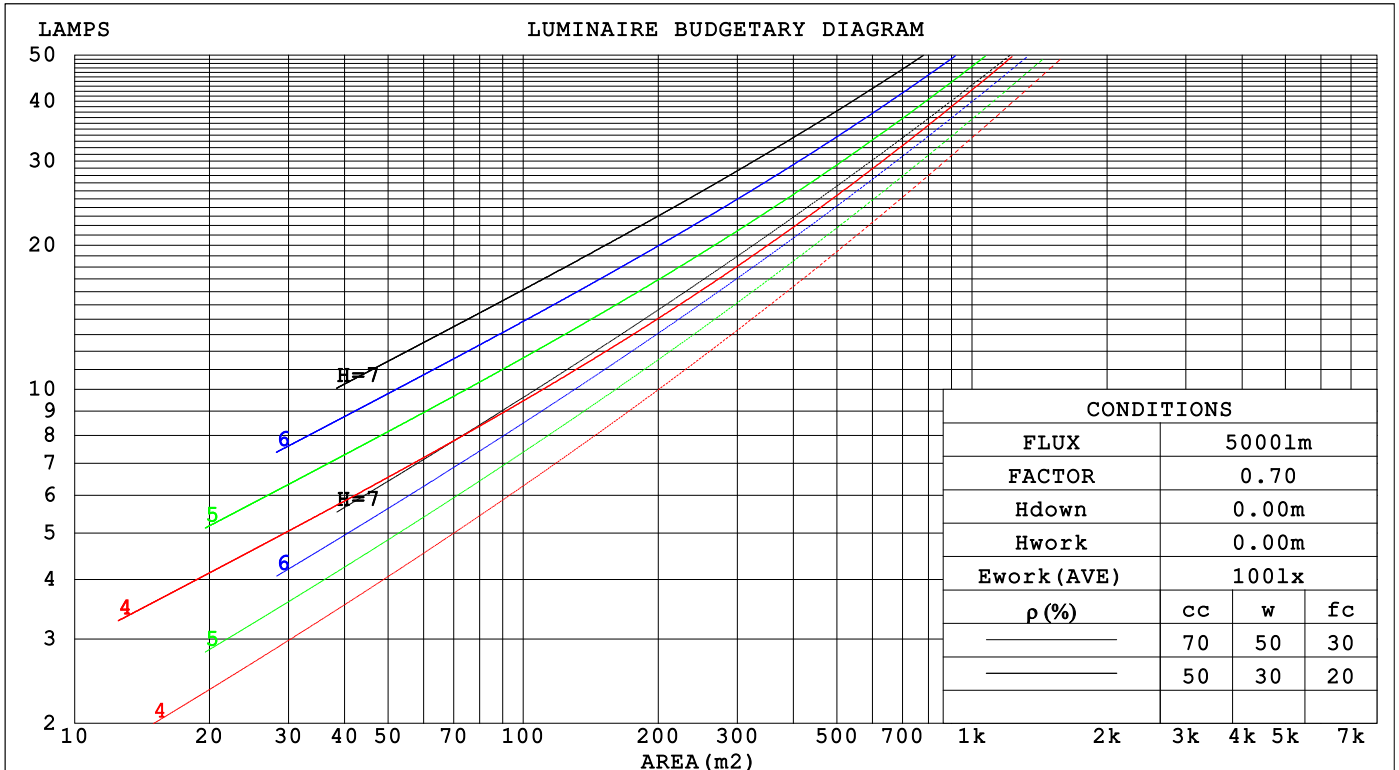
C Range: 0 - 360DEG
 C Interval: 22.5DEG
 Test Speed: HIGH
 Temperature: 25.3°C
 Operators: DAMIN
 Test Date: 2024-03-21

γ Range: 0 - 180DEG
 γ Interval: 1.0DEG
 Test System: SALED GO-2000B_V1 SYSTEM V2.00.479
 Humidity: 65.0%
 Test Distance: 8.700m [K=1.0000]
 Remarks:

CU AND LUMINAIRE BUDGETARY ESTIMATE DIAGRAM

Test:U:23.976V I:0.0299A P:0.7160W PF:1.0000 Freq:0Hz		
UTHdi:0.00% ITHdi:0.00% KDisp:0 Lamp Flux:120.78x1 lm		
NAME: NOVA 2D	TYPE:	WEIGHT:
SPEC.:	DIM.:	SERIAL No.:
	SUR.:	Shielding Angle:

ρ_{cc}	80%			70%			50%			30%			10%			0
ρ_w	50%	30%	10%	50%	30%	10%	50%	30%	10%	50%	30%	10%	50%	30%	10%	0
ρ_{fc}	20%			20%			20%			20%			20%			0
RCR	RCR:Room Cavity Ratio			Coefficients of Utilization(CU)												
0.0	1.18	1.18	1.18	1.15	1.15	1.15	1.09	1.09	1.09	1.03	1.03	1.03	.98	.98	.98	.96
1.0	.90	.83	.76	.88	.81	.74	.82	.76	.71	.77	.72	.68	.73	.69	.65	.62
2.0	.70	.59	.50	.68	.58	.49	.63	.54	.47	.59	.51	.45	.55	.49	.43	.40
3.0	.57	.44	.34	.55	.43	.34	.51	.41	.32	.47	.38	.31	.43	.36	.30	.27
4.0	.47	.35	.25	.46	.34	.25	.42	.32	.24	.39	.30	.23	.36	.28	.22	.19
5.0	.41	.28	.19	.39	.28	.19	.36	.26	.18	.33	.24	.17	.31	.23	.17	.14
6.0	.35	.24	.15	.34	.23	.15	.32	.22	.14	.29	.21	.14	.27	.19	.13	.11
7.0	.31	.20	.13	.30	.20	.12	.28	.19	.12	.26	.18	.11	.24	.17	.11	.08
8.0	.28	.18	.11	.27	.17	.10	.25	.16	.10	.24	.16	.10	.22	.15	.09	.07
9.0	.26	.16	.09	.25	.15	.09	.23	.15	.09	.22	.14	.08	.20	.13	.08	.06
10.0	.23	.14	.08	.23	.14	.08	.21	.13	.07	.20	.12	.07	.19	.12	.07	.05



C Range: 0 - 360DEG
 C Interval: 22.5DEG
 Test Speed: HIGH
 Temperature:25.3°C
 Operators:DAMIN
 Test Date:2024-03-21

γ Range: 0 - 180DEG
 γ Interval: 1.0DEG
 Test System: SALED GO-2000B_v1 SYSTEM V2.00.479
 Humidity:65.0%
 Test Distance:8.700m [K=1.0000]
 Remarks:

WEC AND CCEC

Test:U:23.976V I:0.0299A P:0.7160W PF:1.0000 Freq:0Hz		
UTHDi:0.00% ITHDi:0.00% KDisp:0 Lamp Flux:120.78x1 lm		
NAME: NOVA 2D	TYPE:	WEIGHT:
SPEC.:	DIM.:	SERIAL No.:
	SUR.:	Shielding Angle:

ρ_{cc}	80%			70%			50%			30%			10%			0
ρ_w	50%	30%	10%	50%	30%	10%	50%	30%	10%	50%	30%	10%	50%	30%	10%	0
ρ_{fc}	20%			20%			20%			20%			20%			0
RCR	RCR:Room Cavity Ratio						Wall Exitance Coefficients(WEC)									
0.0																
1.0	.549	.312	.099	.540	.308	.098	.524	.300	.096	.508	.293	.094	.494	.286	.092	
2.0	.474	.260	.080	.466	.257	.079	.451	.251	.078	.436	.245	.077	.423	.239	.075	
3.0	.408	.217	.065	.401	.215	.065	.387	.209	.064	.374	.205	.063	.362	.200	.062	
4.0	.354	.184	.054	.348	.182	.054	.335	.178	.053	.323	.174	.052	.313	.170	.052	
5.0	.312	.159	.046	.306	.157	.046	.295	.153	.045	.284	.150	.045	.274	.147	.044	
6.0	.278	.139	.040	.273	.138	.040	.263	.135	.039	.253	.132	.039	.244	.129	.038	
7.0	.250	.124	.035	.246	.122	.035	.237	.120	.034	.228	.117	.034	.220	.115	.034	
8.0	.228	.111	.031	.224	.110	.031	.216	.108	.031	.208	.105	.030	.201	.103	.030	
9.0	.209	.101	.028	.205	.100	.028	.198	.098	.028	.191	.096	.027	.185	.094	.027	
10.0	.193	.092	.026	.189	.091	.026	.183	.090	.025	.177	.088	.025	.171	.086	.025	

ρ_{cc}	80%			70%			50%			30%			10%			0
ρ_w	50%	30%	10%	50%	30%	10%	50%	30%	10%	50%	30%	10%	50%	30%	10%	0
ρ_{fc}	20%			20%			20%			20%			20%			0
RCR	RCR:Room Cavity Ratio						Ceiling Cavity Exitance Coefficients(CCEC)									
0.0	.222	.222	.222	.190	.190	.190	.129	.129	.129	.074	.074	.074	.024	.024	.024	
1.0	.228	.186	.147	.196	.159	.127	.134	.110	.088	.077	.063	.051	.025	.020	.016	
2.0	.228	.163	.108	.196	.140	.093	.134	.097	.065	.077	.056	.038	.025	.018	.012	
3.0	.223	.147	.087	.191	.127	.075	.131	.088	.053	.076	.052	.031	.024	.017	.010	
4.0	.215	.135	.075	.184	.117	.065	.127	.082	.046	.073	.048	.027	.024	.016	.009	
5.0	.206	.126	.067	.177	.109	.059	.122	.076	.041	.070	.045	.025	.023	.015	.008	
6.0	.196	.118	.062	.169	.102	.054	.116	.072	.038	.068	.042	.023	.022	.014	.008	
7.0	.187	.112	.059	.161	.097	.051	.111	.068	.036	.065	.040	.022	.021	.013	.007	
8.0	.179	.106	.056	.154	.092	.049	.107	.064	.035	.062	.038	.021	.020	.012	.007	
9.0	.171	.101	.054	.147	.088	.047	.102	.062	.033	.059	.036	.020	.019	.012	.007	
10.0	.164	.096	.052	.141	.084	.045	.098	.059	.032	.057	.035	.019	.018	.011	.006	

C Range: 0 - 360DEG
 C Interval: 22.5DEG
 Test Speed: HIGH
 Temperature:25.3°C
 Operators:DAMIN
 Test Date:2024-03-21

γ Range: 0 - 180DEG
 γ Interval: 1.0DEG
 Test System: SALED O-2000B_V1 SYSTEM V2.00.479
 Humidity:65.0%
 Test Distance:8.700m [K=1.0000]
 Remarks:

UGR(Unified Glare Rating) Table

Test:U:23.976V I:0.0299A P:0.7160W PF:1.0000 Freq:0Hz										
UTHDi:0.00% ITHDi:0.00% KDisp:0 Lamp Flux:120.78x1 lm										
NAME: NOVA 2D					TYPE:			WEIGHT:		
SPEC.:					DIM.:			SERIAL No.:		
					SUR.:			Shielding Angle:		
ceiling/cavity	0.7	0.7	0.5	0.5	0.3	0.7	0.7	0.5	0.5	0.3
walls	0.5	0.3	0.5	0.3	0.3	0.5	0.3	0.5	0.3	0.3
working plane	0.2	0.2	0.2	0.2	0.2	0.2	0.2	0.2	0.2	0.2
Room dimensions	Viewed crosswise					Viewed endwise				
x = 2H y = 2H	16.5	18.5	16.8	18.8	19.1	16.0	18.0	16.3	18.3	18.6
3H	22.9	24.8	23.3	25.1	25.5	22.4	24.3	22.8	24.6	25.0
4H	26.0	27.8	26.4	28.2	28.6	25.6	27.4	26.0	27.8	28.2
6H	27.5	29.3	28.0	29.7	30.1	27.4	29.1	27.8	29.5	29.9
8H	27.7	29.4	28.2	29.8	30.3	27.5	29.3	28.0	29.7	30.1
12H	27.8	29.5	28.2	29.9	30.3	27.6	29.3	28.0	29.7	30.1
4H 2H	18.4	20.2	18.8	20.6	21.0	18.1	19.9	18.5	20.3	20.7
3H	24.5	26.2	24.9	26.6	27.0	24.1	25.8	24.6	26.2	26.6
4H	27.5	29.1	28.0	29.5	30.0	27.3	28.8	27.7	29.2	29.7
6H	29.1	30.5	29.6	31.0	31.5	29.0	30.4	29.5	30.9	31.4
8H	29.3	30.7	29.8	31.1	31.6	29.2	30.6	29.7	31.0	31.5
12H	29.4	30.7	29.9	31.1	31.7	29.3	30.5	29.8	31.0	31.6
8H 4H	28.4	29.7	28.9	30.2	30.7	28.2	29.5	28.7	30.0	30.5
6H	30.0	31.1	30.5	31.6	32.1	29.9	31.1	30.4	31.6	32.1
8H	30.2	31.3	30.8	31.8	32.4	30.2	31.3	30.8	31.8	32.3
12H	30.4	31.3	31.0	31.8	32.4	30.4	31.3	30.9	31.8	32.4
12H 4H	28.5	29.7	29.0	30.2	30.7	28.3	29.5	28.8	30.0	30.5
6H	30.1	31.1	30.6	31.6	32.2	30.0	31.1	30.6	31.6	32.1
8H	30.4	31.3	30.9	31.8	32.4	30.4	31.3	30.9	31.8	32.4
Variations with the observer position at spacings(CIE Pub.117):										
S = 1.0H	+ 0.1 / - 0.1					+ 0.1 / - 0.1				
1.5H	+ 0.1 / - 0.1					+ 0.1 / - 0.1				
2.0H	+ 0.1 / - 0.2					+ 0.1 / - 0.3				

CIE Pub.117, 120.8 lm Total Lamp Luminous Flux Correct (8log(F/F0) = -7.3)
Area: 0.1 m2

C Range: 0 - 360DEG
C Interval: 22.5DEG
Test Speed: HIGH
Temperature:25.3°C
Operators:DAMIN
Test Date:2024-03-21

γ Range: 0 - 180DEG
γ Interval: 1.0DEG
Test System: SALED GO-2000B_V1 SYSTEM V2.00.479
Humidity:65.0%
Test Distance:8.700m [K=1.0000]
Remarks:

UTILIZATION FACTORS TABLE

Test:U:23.976V I:0.0299A P:0.7160W PF:1.0000 Freq:0Hz		
UTHDi:0.00% ITHDi:0.00% KDisp:0 Lamp Flux:120.78x1 lm		
NAME: NOVA 2D	TYPE:	WEIGHT:
SPEC.:	DIM.:	SERIAL No.:
	SUR.:	Shielding Angle:

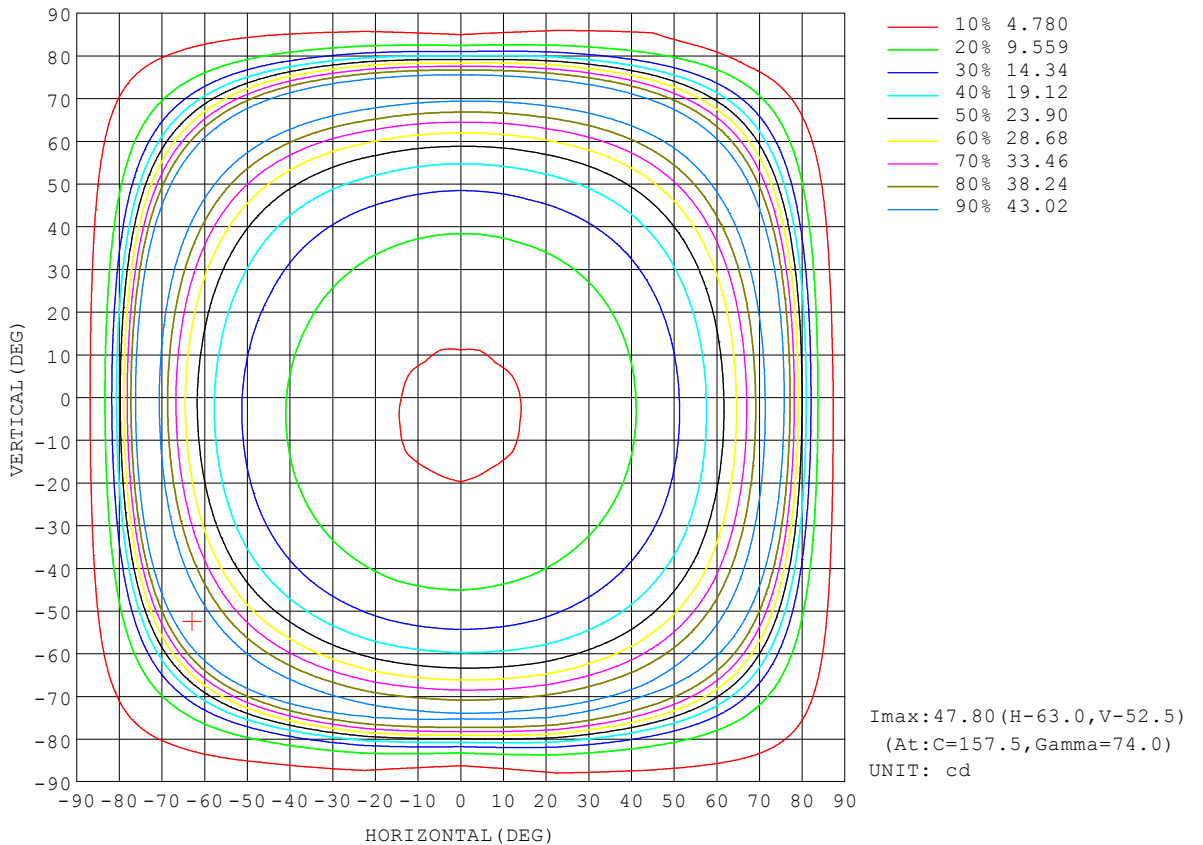
REFLECTANCE										
Ceiling	0.8	0.8	0.8	0.7	0.7	0.7	0.5	0.5	0.5	0
Walls	0.7	0.5	0.3	0.7	0.5	0.3	0.7	0.5	0.3	0
Working plane	0.2	0.2	0.2	0.2	0.2	0.2	0.2	0.2	0.2	0
ROOM INDEX	UTILIZATION FACTORS (PERCENT) k(RI) x RCR = 5									
k = 0.60	39	25	16	38	24	16	37	24	15	7
0.80	46	30	20	45	30	20	43	29	20	10
1.00	53	36	25	51	35	25	48	38	24	14
1.25	60	43	32	58	42	31	54	40	30	19
1.50	66	50	38	63	48	37	59	46	36	25
2.00	75	60	49	72	58	48	67	56	46	34
2.50	82	68	57	79	66	56	73	63	54	42
3.00	87	74	65	84	72	63	78	69	61	48
4.00	94	83	75	91	81	73	85	77	70	58
5.00	98	89	82	95	87	80	89	83	77	64
ROOM INDEX	UF(total)									Direct
According to DIN EN 13032-2 2004			Suspended				SHRNOM = 1.25			

C Range: 0 - 360DEG
 C Interval: 22.5DEG
 Test Speed: HIGH
 Temperature:25.3°C
 Operators:DAMIN
 Test Date:2024-03-21

γ Range: 0 - 180DEG
 γ Interval: 1.0DEG
 Test System: SALED GO-2000B_V1 SYSTEM V2.00.479
 Humidity:65.0%
 Test Distance:8.700m [K=1.0000]
 Remarks:

ISOCANDELA DIAGRAM

Test:U:23.976V I:0.0299A P:0.7160W PF:1.0000 Freq:0Hz UTHDi:0.00% ITHDi:0.00% KDisp:0 Lamp Flux:120.78x1 lm		
NAME: NOVA 2D	TYPE:	WEIGHT:
SPEC.:	DIM.:	SERIAL No.:
	SUR.:	Shielding Angle:



C Range: 0 - 360DEG
 C Interval: 22.5DEG
 Test Speed: HIGH
 Temperature: 25.3°C
 Operators: DAMIN
 Test Date: 2024-03-21

γ Range: 0 - 180DEG
 γ Interval: 1.0DEG
 Test System: SALED GO-2000B_V1 SYSTEM V2.00.479
 Humidity: 65.0%
 Test Distance: 8.700m [K=1.0000]
 Remarks:

AAI CURVES

Test:U:23.976V I:0.0299A P:0.7160W PF:1.0000 Freq:0Hz		
UTHDi:0.00% ITHDi:0.00% KDisp:0 Lamp Flux:120.78x1 lm		
NAME: NOVA 2D	TYPE:	WEIGHT:
SPEC.:	DIM.:	SERIAL No.:
	SUR.:	Shielding Angle:

	2	4	6	8	10	lx
	0.1858	0.3716	0.5574	0.7432	0.929	fc
1	$\theta = 178.9 \text{DEG}$					
3.281	$\Phi \text{ out} = 115.8 \text{ lm}$					
3						
9.843						
5						
16.4						
7						
22.97						
9						
29.53						
m	4	2	0	2	4	
ft	13.1234	6.5617	0.0000	6.5617	13.1234	

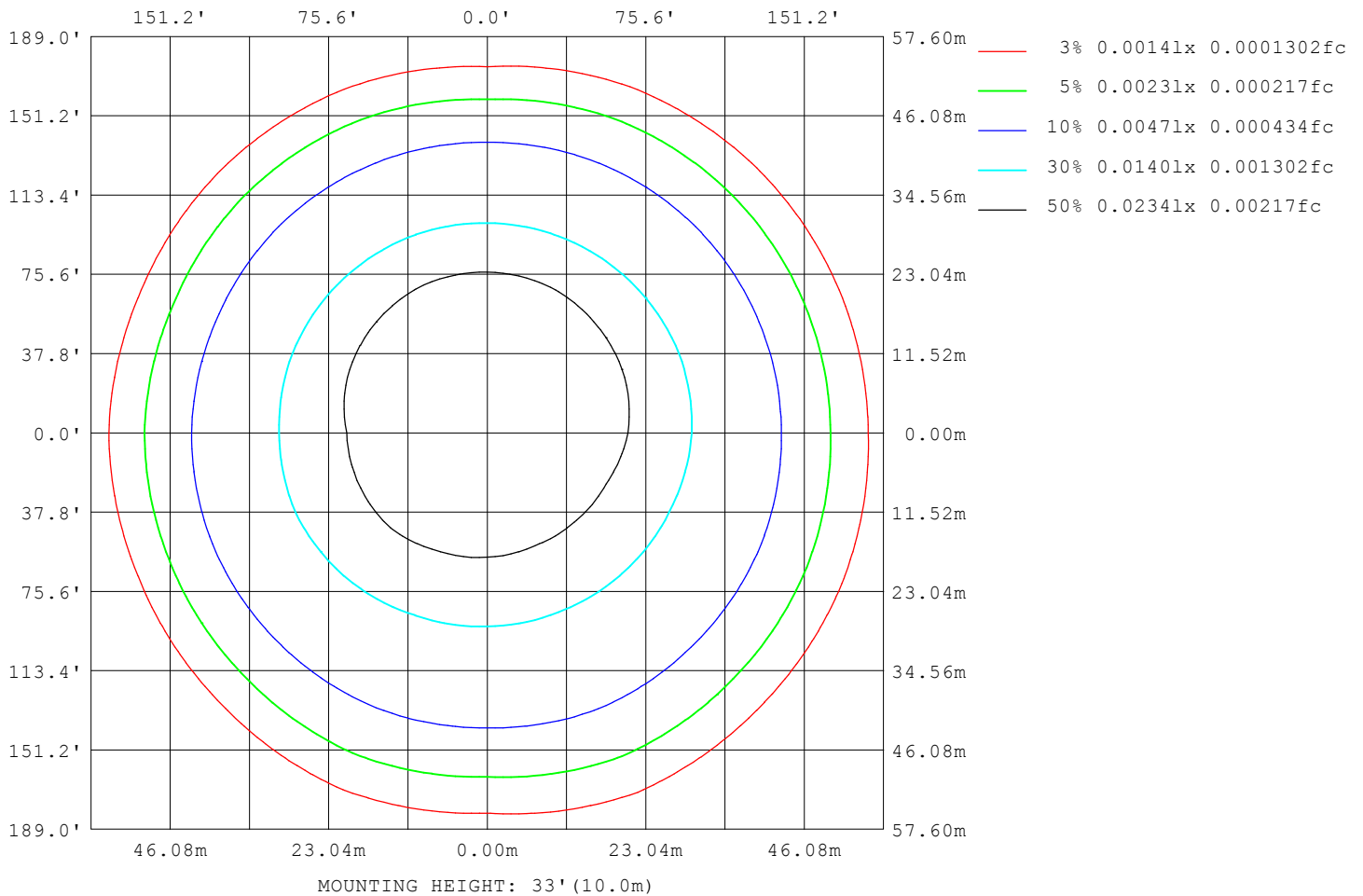
Note: The Curves indicate the illuminated area and the average illumination when the luminaire is at different distance.

C Range: 0 - 360DEG
C Interval: 22.5DEG
Test Speed: HIGH
Temperature: 25.3°C
Operators: DAMIN
Test Date: 2024-03-21

γ Range: 0 - 180DEG
 γ Interval: 1.0DEG
Test System: SALED O-2000B_V1 SYSTEM V2.00.479
Humidity: 65.0%
Test Distance: 8.700m [K=1.0000]
Remarks:

ISOLUX DIAGRAM

Test:U:23.976V I:0.0299A P:0.7160W PF:1.0000 Freq:0Hz UTHDi:0.00% ITHDi:0.00% KDisp:0 Lamp Flux:120.78x1 lm		
NAME: NOVA 2D	TYPE:	WEIGHT:
SPEC.:	DIM.:	SERIAL No.:
	SUR.:	Shielding Angle:



C Range: 0 - 360DEG
 C Interval: 22.5DEG
 Test Speed: HIGH
 Temperature:25.3°C
 Operators:DAMIN
 Test Date:2024-03-21

γ Range: 0 - 180DEG
 γ Interval: 1.0DEG
 Test System: SALED GO-2000B_V1 SYSTEM V2.00.479
 Humidity:65.0%
 Test Distance:8.700m [K=1.0000]
 Remarks:

LED Avg.L Report

Test:U:23.976V I:0.0299A P:0.7160W PF:1.0000 Freq:0Hz UTHDi:0.00% ITHDi:0.00% KDisp:0 Lamp Flux:120.78x1 lm		
NAME: NOVA 2D	TYPE:	WEIGHT:
SPEC.:	DIM.:	SERIAL No.:
	SUR.:	Shielding Angle:

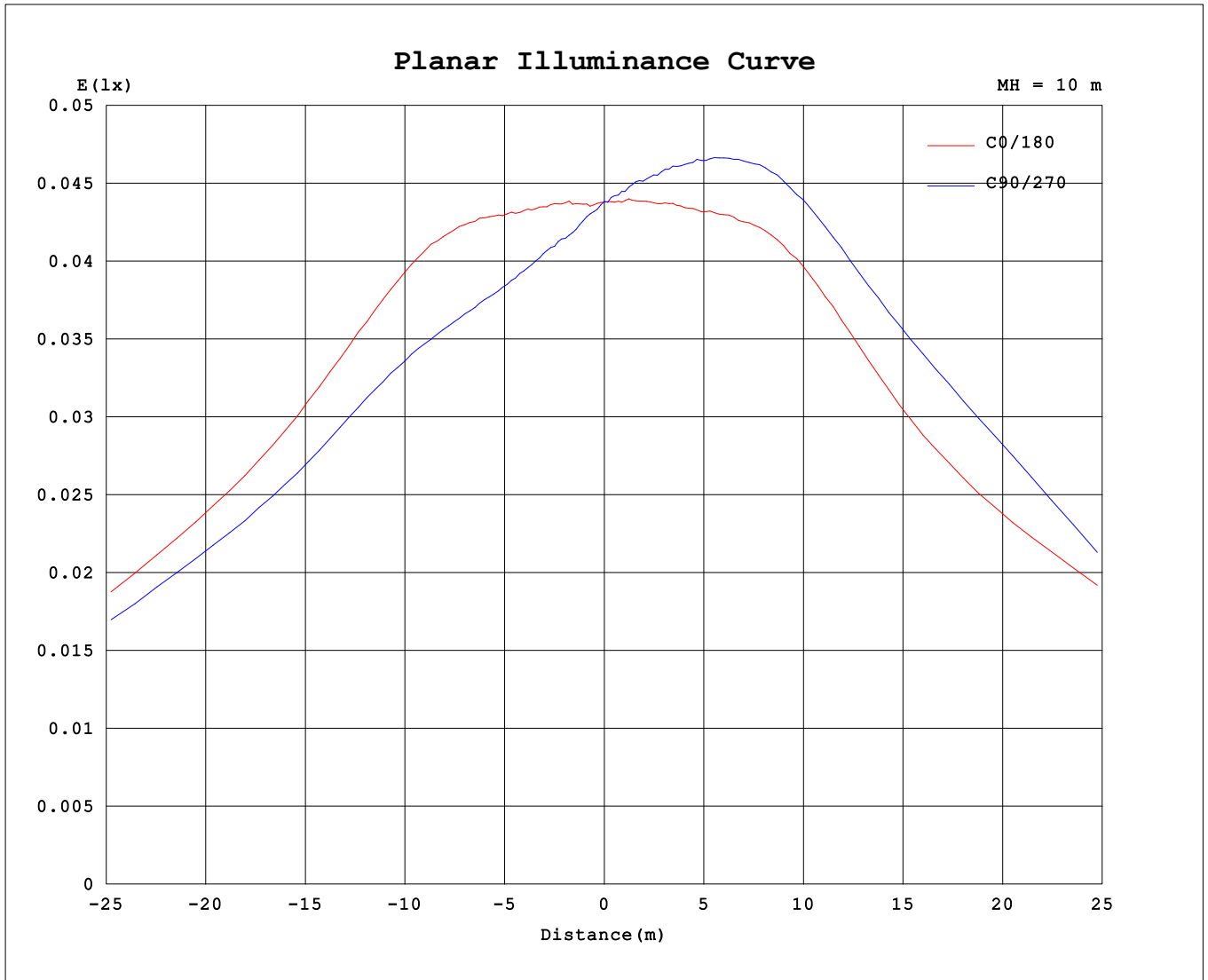
AvgL	cd/m2
L_0~180 (65) av	698
L_0~180 (75) av	1763
L_0~180 (85) av	784
L_90~270 (65) av	723
L_90~270 (75) av	1700
L_90~270 (85) av	626
L_45 (65) av	713
L_45 (75) av	1730
L_45 (85) av	777

Standard: GB/T 29293-2012

C Range: 0 - 360DEG
 C Interval: 22.5DEG
 Test Speed: HIGH
 Temperature:25.3°C
 Operators:DAMIN
 Test Date:2024-03-21

γ Range: 0 - 180DEG
 γ Interval: 1.0DEG
 Test System: SALED GO-2000B_V1 SYSTEM V2.00.479
 Humidity:65.0%
 Test Distance:8.700m [K=1.0000]
 Remarks:

Planar Illuminance Curve



C Range: 0 - 360DEG
 C Interval: 22.5DEG
 Test Speed: HIGH
 Temperature: 25.3°C
 Operators: DAMIN
 Test Date: 2024-03-21

γ Range: 0 - 180DEG
 γ Interval: 1.0DEG
 Test System: SALED GO-2000B_V1 SYSTEM V2.00.479
 Humidity: 65.0%
 Test Distance: 8.700m [K=1.0000]
 Remarks:

LUMINOUS DISTRIBUTION INTENSITY DATA

Test:U:23.976V I:0.0299A P:0.7160W PF:1.0000 Freq:0Hz		
UTHDi:0.00% ITHDi:0.00% KDisp:0 Lamp Flux:120.78x1 lm		
NAME: NOVA 2D	TYPE:	WEIGHT:
SPEC.:	DIM.:	SERIAL No.:
	SUR.:	Shielding Angle:

Table--1

UNIT: cd

C (DEG) γ (DEG)	0	22.5	45	67.5	90	112.5	135	157.5	180	202.5	225	247.5	270	292.5	315	337.5			
0	4.38	4.37	4.37	4.33	4.39	4.33	4.37	4.36	4.38	4.37	4.37	4.33	4.39	4.33	4.37	4.36			
5	4.42	4.41	4.36	4.34	4.34	4.34	4.35	4.40	4.43	4.40	4.47	4.43	4.50	4.44	4.50	4.42			
10	4.59	4.54	4.43	4.43	4.36	4.42	4.41	4.52	4.59	4.59	4.70	4.67	4.73	4.67	4.71	4.61			
15	4.84	4.78	4.65	4.61	4.54	4.59	4.62	4.75	4.85	4.89	5.02	5.00	5.05	5.01	5.00	4.90			
20	5.22	5.13	4.96	4.90	4.79	4.88	4.92	5.10	5.25	5.33	5.50	5.53	5.55	5.47	5.46	5.33			
25	5.80	5.65	5.44	5.34	5.21	5.30	5.39	5.61	5.82	6.00	6.19	6.23	6.25	6.13	6.07	5.93			
30	6.60	6.39	6.12	5.98	5.81	5.91	6.05	6.34	6.62	6.91	7.16	7.19	7.18	7.08	6.94	6.77			
35	7.70	7.42	7.12	6.86	6.66	6.74	6.98	7.36	7.74	8.17	8.45	8.50	8.45	8.39	8.18	7.92			
40	9.19	8.80	8.48	8.12	7.86	7.92	8.27	8.76	9.27	9.87	10.2	10.2	10.2	10.2	9.87	9.52			
45	11.1	10.6	10.3	9.79	9.50	9.56	10.0	10.5	11.2	12.0	12.3	12.5	12.4	12.5	12.1	11.6			
50	13.6	12.9	12.5	12.0	11.8	11.9	12.3	12.9	13.6	14.6	15.0	15.5	15.4	15.4	14.8	14.3			
55	16.9	15.9	15.4	14.8	14.8	15.1	15.7	16.1	16.8	18.1	18.7	19.5	19.5	19.3	18.6	17.9			
60	21.8	20.3	19.5	19.1	19.4	19.8	20.7	21.1	21.6	23.2	24.4	25.5	25.7	25.2	24.1	23.0			
65	29.5	27.2	26.4	26.0	26.5	27.2	28.6	29.3	29.5	31.7	33.2	34.5	34.6	34.1	32.4	31.1			
70	40.4	38.0	36.8	36.2	36.4	37.3	39.4	41.3	41.5	43.3	44.0	44.5	44.0	43.7	42.9	42.1			
75	44.8	44.3	43.5	43.6	43.3	44.0	45.4	47.0	46.4	45.8	45.5	44.9	44.7	44.4	44.7	45.0			
80	23.7	25.1	25.5	26.5	23.4	24.9	23.1	22.2	22.6	21.3	21.2	20.5	18.6	21.4	22.5	23.3			
85	7.08	7.63	7.88	7.97	6.23	7.38	6.73	6.40	6.59	6.19	6.06	5.83	4.69	6.02	6.43	5.32			
90	3.47	3.65	3.79	3.80	2.79	3.49	3.32	3.17	3.13	2.96	2.90	2.75	0.79	2.87	2.18	3.27			
95	2.50	2.51	2.60	2.36	0.23	2.24	2.39	2.33	2.32	2.24	2.22	1.94	0.17	1.89	2.31	2.34			
100	1.94	1.92	1.96	1.62	0.23	1.49	1.83	1.79	1.79	1.73	1.66	1.18	0.17	1.23	1.71	1.82			
105	1.51	1.47	1.46	1.02	0.23	0.92	1.35	1.38	1.36	1.33	1.37	0.74	0.17	0.76	0.96	1.41			
110	1.16	1.12	1.08	0.70	0.23	0.56	1.00	1.06	1.06	1.05	0.93	0.52	0.16	0.53	0.92	1.10			
115	0.92	0.86	0.78	0.47	0.23	0.35	0.72	0.82	0.84	0.83	0.67	0.38	0.15	0.39	0.65	0.86			
120	0.76	0.68	0.60	0.34	0.22	0.28	0.56	0.65	0.68	0.68	0.51	0.32	0.15	0.34	0.50	0.70			
125	0.64	0.56	0.50	0.29	0.21	0.23	0.48	0.54	0.57	0.58	0.43	0.27	0.15	0.32	0.43	0.59			
130	0.57	0.49	0.46	0.27	0.21	0.20	0.43	0.47	0.50	0.51	0.37	0.23	0.15	0.29	0.38	0.53			
135	0.52	0.45	0.43	0.26	0.21	0.16	0.39	0.43	0.46	0.46	0.32	0.20	0.15	0.28	0.34	0.22			
140	0.47	0.41	0.40	0.23	0.21	0.16	0.33	0.38	0.41	0.41	0.27	0.18	0.14	0.25	0.32	0.41			
145	0.42	0.36	0.34	0.18	0.18	0.13	0.25	0.31	0.33	0.35	0.20	0.15	0.11	0.21	0.27	0.40			
150	0.37	0.30	0.21	0.13	0.16	0.10	0.16	0.16	0.25	0.22	0.09	0.14	0.09	0.16	0.17	0.35			
155	0.14	0.09	0.17	0.09	0.14	0.09	0.14	0.09	0.09	0.13	0.09	0.12	0.09	0.14	0.12	0.17			
160	0.11	0.08	0.13	0.09	0.12	0.09	0.12	0.09	0.09	0.11	0.09	0.11	0.09	0.11	0.09	0.12			
165	0.10	0.08	0.10	0.09	0.11	0.09	0.10	0.09	0.09	0.10	0.09	0.10	0.09	0.10	0.09	0.10			
170	0.10	0.08	0.09	0.09	0.10	0.09	0.10	0.09	0.09	0.10	0.09	0.10	0.09	0.09	0.09	0.10			
175	0.09	0.08	0.09	0.09	0.10	0.09	0.10	0.09	0.09	0.09	0.09	0.10	0.09	0.09	0.09	0.10			
180	0.09	0.08	0.09	0.09	0.09	0.09	0.10	0.09	0.09	0.09	0.09	0.09	0.09	0.09	0.09	0.10			

C Range: 0 - 360DEG
C Interval: 22.5DEG
Test Speed: HIGH
Temperature:25.3°C
Operators:DAMIN
Test Date:2024-03-21

γ Range: 0 - 180DEG
γ Interval: 1.0DEG
Test System: SALED GO-2000B_V1 SYSTEM V2.00.479
Humidity:65.0%
Test Distance:8.700m [K=1.0000]
Remarks: